

110 - 4" 21/64 289 - 11" 3/8

90 - 3" 35/64

Ø12 - 15/32 for M3/8 screw

B (Flap position detector)

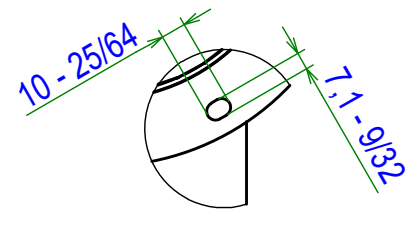
Inductive detector M12

C (Build up detector)

Capacitive detector M12

A (Hole x6 for 1/4 screw)

398 - 15" 43/64
 216 - 8" 1/2
 120 - 4" 23/32
 Ø205,8 - 8" 7/64
 Ø185,7 - 7" 5/16
 Ø148,5 - 6"



Pressure resistance = 2bar
 Optional flanges and flange gaskets

Informative dimension

Weight : 20 kg

A	Création	22/03/21	BM	MJ
Ind.	Objet de la modification	Date	Nom	Vérif.
Matière:		Date de création: 22/03/2021	A3	Ech.: s/e
Plan n°: 57VP_006_Clt				
Désignation: VigiFlap PASSIVE Ø6"				